

LTECH

Artnet-DMX Control System

Artnet-DMX-8



ART
NET
ETHERNET

Manual

Product Introduction

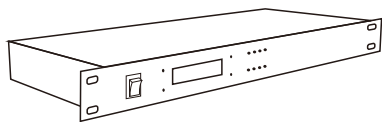
- Ethernet Control System based on the Artnet protocol.
- Set different network segments to avoid multiple sets Artnet data interference.
- Convert the Artnet network data package into DMX512 data.
- Adopting high-speed ARM processor, stable and reliable.
- Supports RJ45 network interface and 3-pin XLR DMX512 output interface.
- With LCD screen display and 4 buttons, convenient operation, intuitive settings.
- Standard 1U(19") chassis architecture, convenient installation in the standard cabinet.
- Provides 8 standard DMX512 data output port.
- Compatible with the light software based on Artnet Protocol, control stage lighting and LED lighting simultaneously.
- Connect up to 256 DMX universes to one network.
- 10/100Mb Ethernet port.
- Data activity indicators.
- Configurable DMX output refresh rates.
- Manage Artnet on broadcast mode or unicast mode.
- Widely used in the LED dot matrix and the stage lighting control network in needing lots of DMX512 data.
- Suitable for TV station recorded scene, stage performances, entertainment and so on.

Technical Specs

Artnet-DMX-8

Power input:	5-24Vdc	Isolation ethernet port:	Total Isolation
Input signal:	Artnet	Isolation power input:	Total Isolation
Output signal:	DMX512	Working temperature:	-30°C~65°C
DMX channels:	8 universe	Dimension:	L483×W200×H44mm
Current input:	30mA@12Vdc	Package size:	L550×W265×H100mm
DMX output connection:	3-pin XLR	Weight (G.W):	2600g
Network connection:	RJ45		

Package Contents



Control System 1pcs



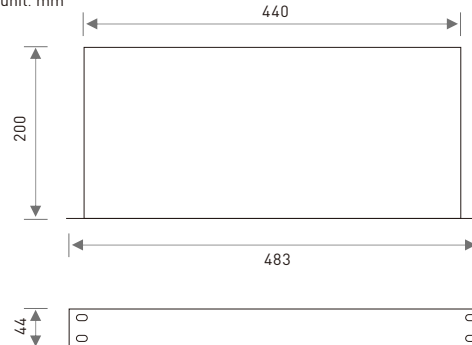
Power Adapter 1pcs



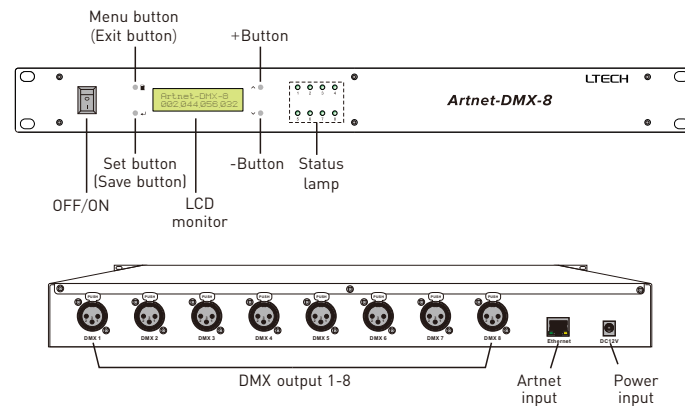
Manual 1pcs

Product Size

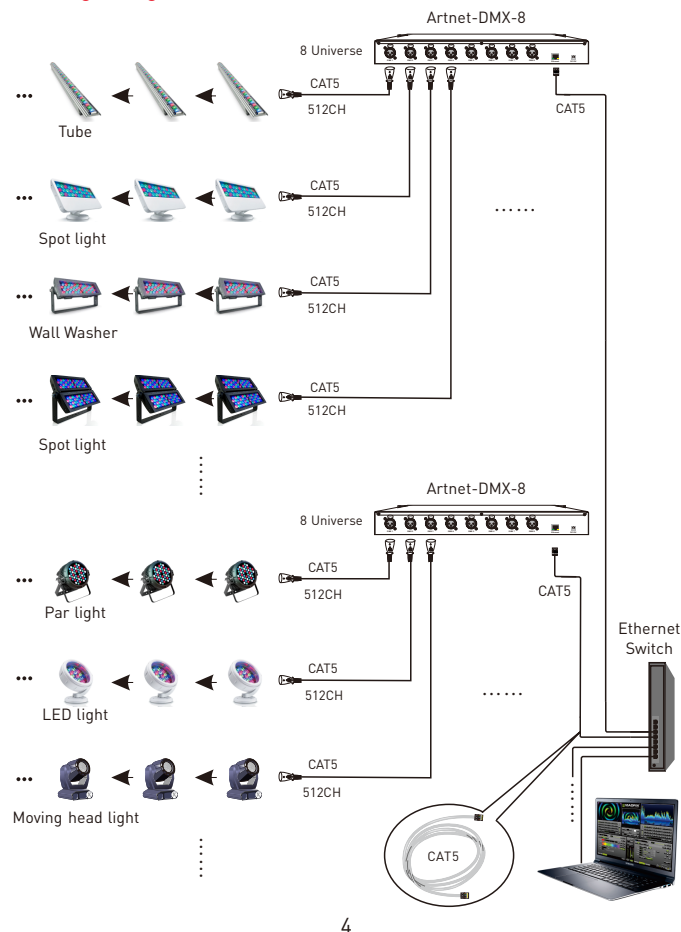
The unit: mm



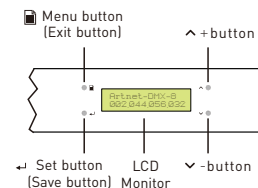
Main Component Description







Wiring Diagram



Screen Use



Button Operating Instructions:

Press the menu button  in the main interface to enter the menu interface. Press ^/v button to move up and down the menu, press the setting button  to set the relative parameter, Press ^/v can adjust the parameter. Press  to save the setting when finished and press  to quit the setting.

Main Interface

Artnet-DMX-8
002 044 056 032

Network

NetWork-IP:
002 044 056 032

NetWork-Mask:
255 000 000 000




NetWork-Gate:
002 000 000 001

Universe

Universe(1 ^ 4):
001 002 003 004

Universe(5 ^ 8):
005 006 007 008

Other Functions of Button:


In the main interface, long press  to enter test mode  (send the dark, light and highlighting jumping data to the 8 ports). Press  to quit the test mode.

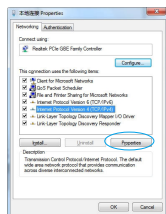
In the main interface, long press ^ / v at the same time to restore factory settings.

Factory Default
Loading...

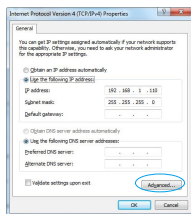
Connect ArtNet-DMX-8 To the Computer

This product is compatible with all the ArtNet software in the market, here take MADRIX as an example:

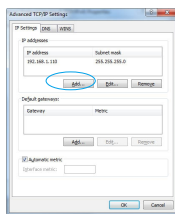
1. Install the Madrix 3 software in the computer, the icon on the desktop : 
2. Use the equipped adapter to power ArtNet-DMX-8.
3. Connect ArtNet-DMX-8 and computer via the cable.
4. IP Setting: This control system is compatible with random network segment. According to the ArtNet protocol, 2.X.X.X or 10.X.X.X can be added in the computer [X means arbitrary value], methods as below:



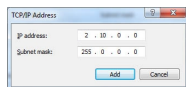
4.1 Open the Network, click "Properties" button of the TCP/IPv4 protocol.



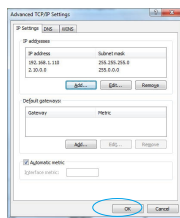
4.2 Click "Advanced".



4.3 Click "Add".



4.4 Add the IP address 2.X.X.X or 10.X.X.X [X could be arbitrary value].

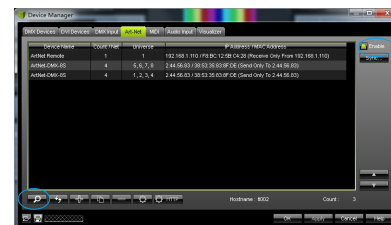


4.5 Interface of adding successful, click "OK" and exit.

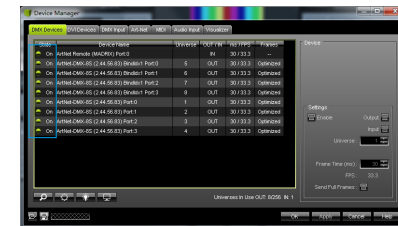
5. Open Madrix 3 software, choose "preferences">" device manager" from menu.



6. In "device manager" dialog, choose "ArtNet" tab, tick "enable" and click search . ArtNet-DMX-8 will be searched.



7. Click the tab of "DMX devices", set port status to "ON" if connected successfully. Now, you can use computer to control lamps via ArtNet-DMX-8.



* MADRIX® is registered trademarks of Inoage GmbH Co., Inc. in Germany.